

TECHNICAL BULLETIN 3: ADDING IRON BRACES TO THE DECK BRIDGE

The Black Bear Deck Bridge Jig and Kit have traditionally shown the steel washers bearing directly on the top and bottom chords. There are photos of this having been done; however, it was more common to use a piece of strap iron, or channel stock, to bridge the distance between the iron rods where they span over (and under) the top and bottom chords.

After December 1, 2004, all Black Bear Deck Bridge Jig and Kits should include this Technical Bulletin or amended instructions that show how to install these straps on the timber deck bridge. The Deck Bridge Kits will also include the material to make the straps.

Scale	Styrene Strap Size to Use
N	.010" x .060"
HO	.015" x .080" *
S	.015" x .156"
O	.030" x .188" *

* Same size as the shim included with the jig.

Table 1 - Styrene material to use for iron straps.

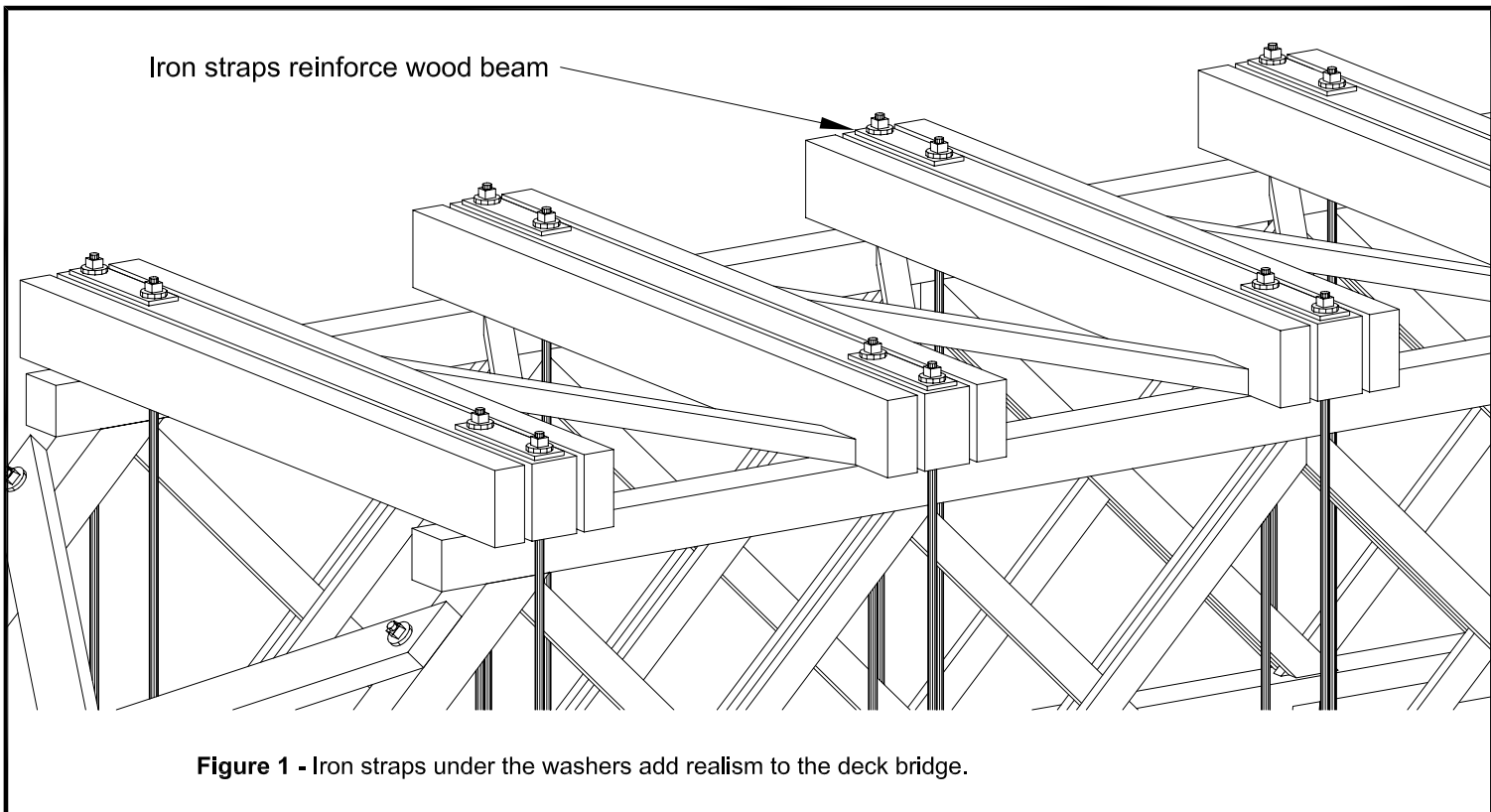


Figure 1 - Iron straps under the washers add realism to the deck bridge.

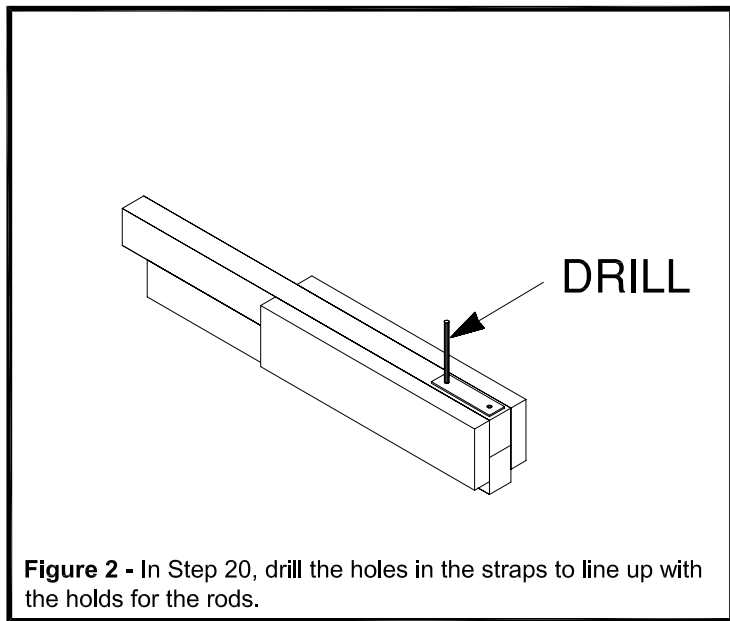


Figure 2 - In Step 20, drill the holes in the straps to line up with the holds for the rods.

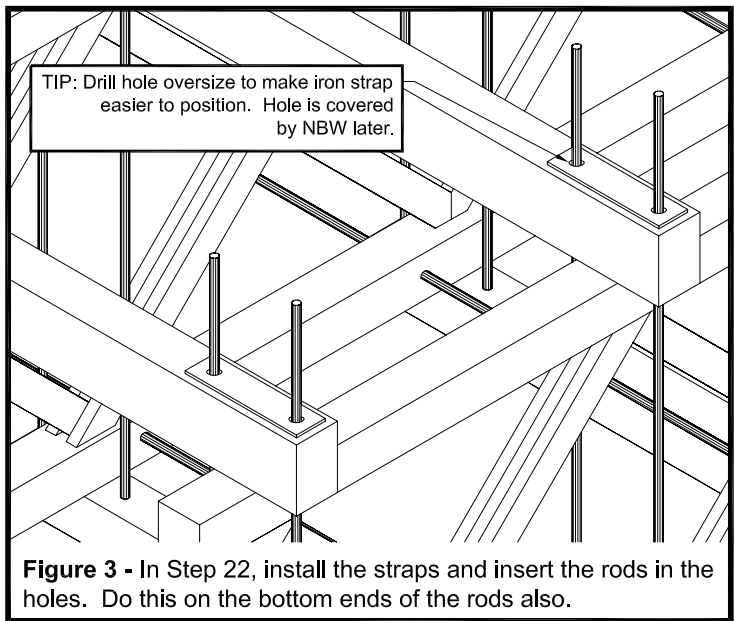


Figure 3 - In Step 22, install the straps and insert the rods in the holes. Do this on the bottom ends of the rods also.