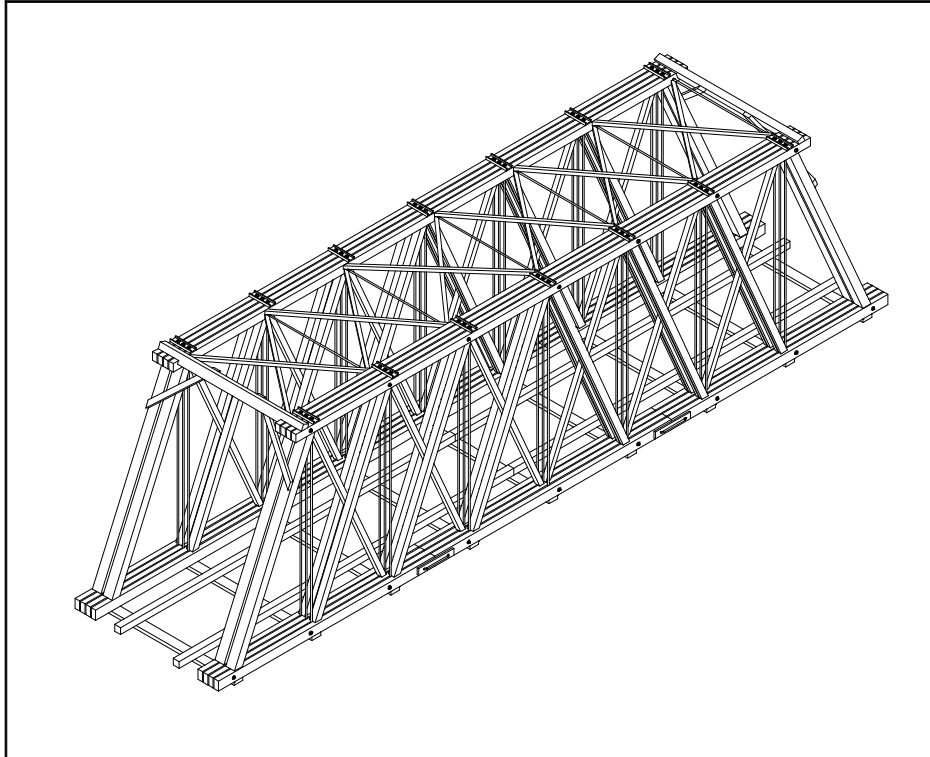


FOX RIVER THRU-TRUSS BRIDGE

REVISIONS TO CONSTRUCTION MANUAL P-570



Since originally releasing the FOX RIVER THRU-TRUSS BRIDGE, we have found some ways to improve the instructions. To ensure an enjoyable construction experience, please follow the changes in this pamphlet.

The changes relate to these areas:

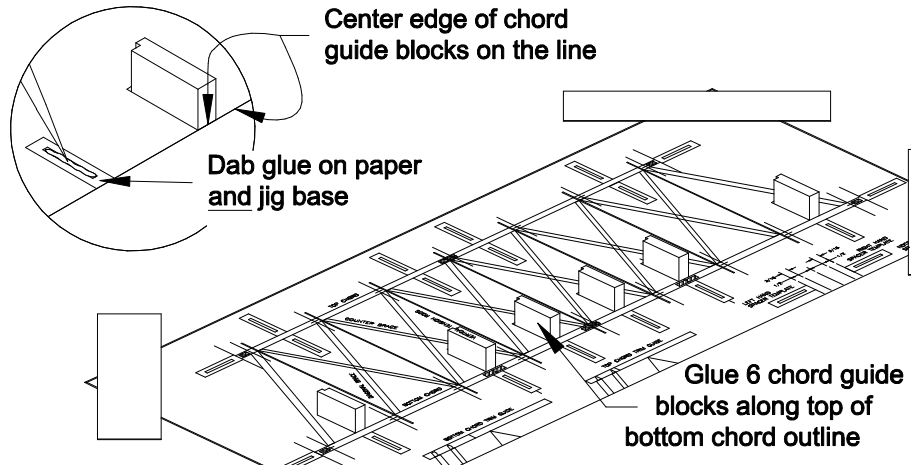
- A better way to build the construction jig
- Additional parts needed to build the prototype floor

FOX RIVER THRU TRUSS BRIDGE

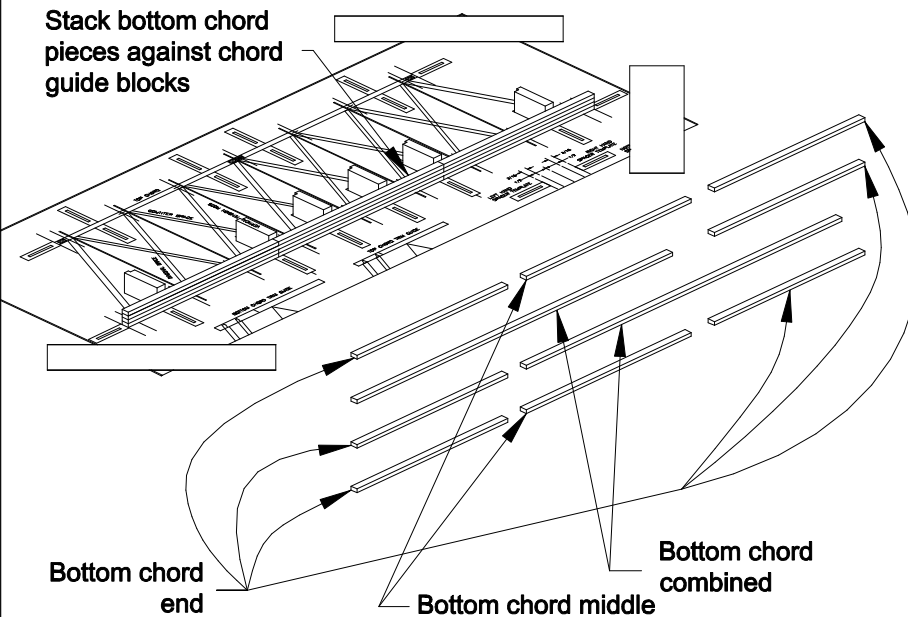
Please use the following instructions on how to build the construction jig.

10. Perform original Step 10 as described in the Construction Manual.

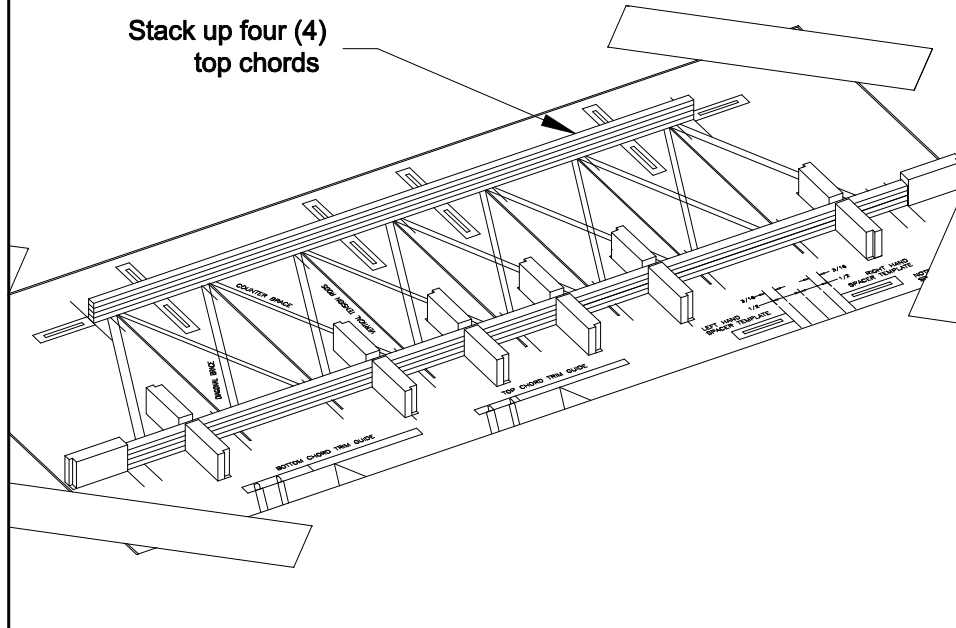
11. Glue six (6) chord guide blocks along the top of the bottom chord outline. Center the edge of the blocks on the line.



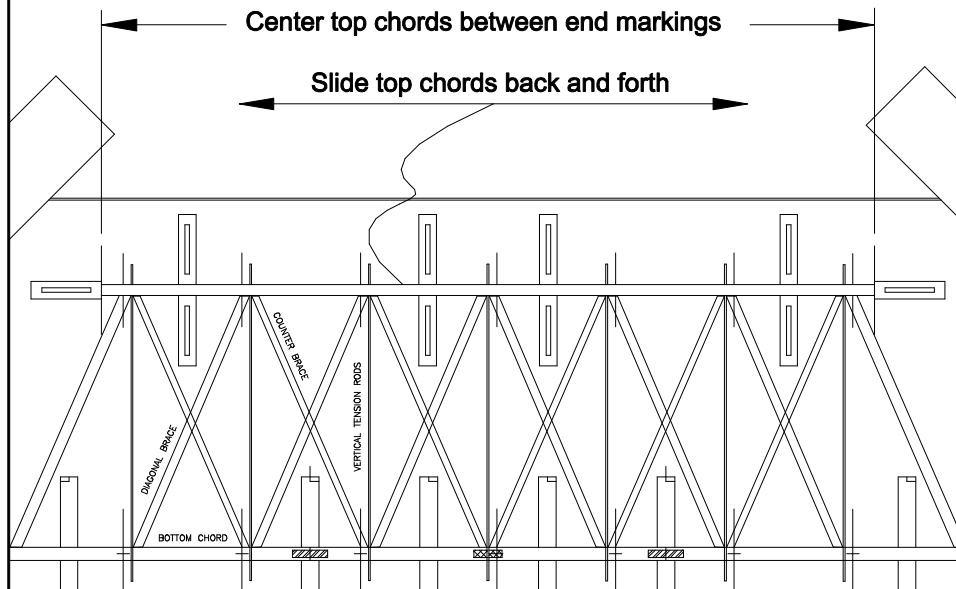
12. Stack up a set of bottom chord components in the sequence shown. Place them on the construction jig drawing at their designated location.



15. Stack up four (4) top chords. Place them where they go on the construction jig drawing.

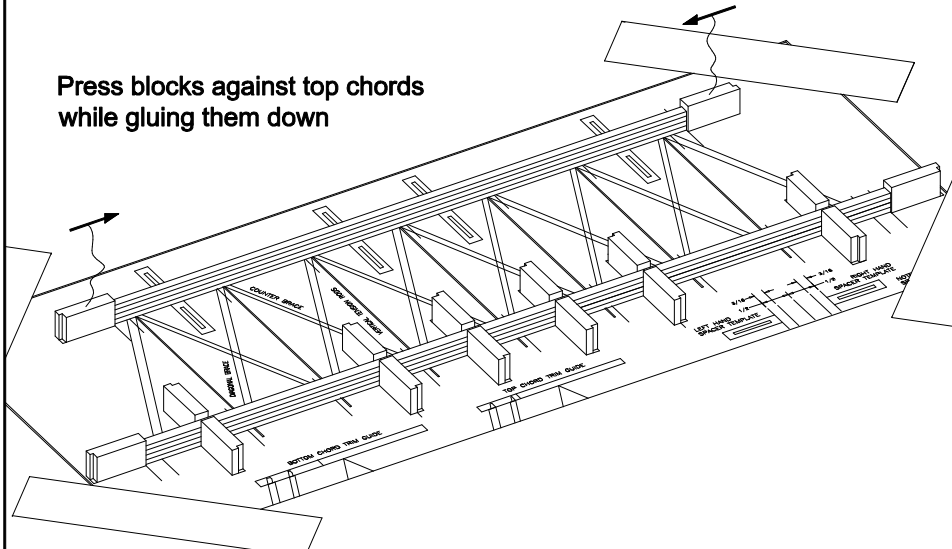


16. Move the top chords left to right and center them between the end marks on the drawing. The ends of the top chords do not need to line up exactly with the marks on the drawing, but the top chords should be centered between the end marks.



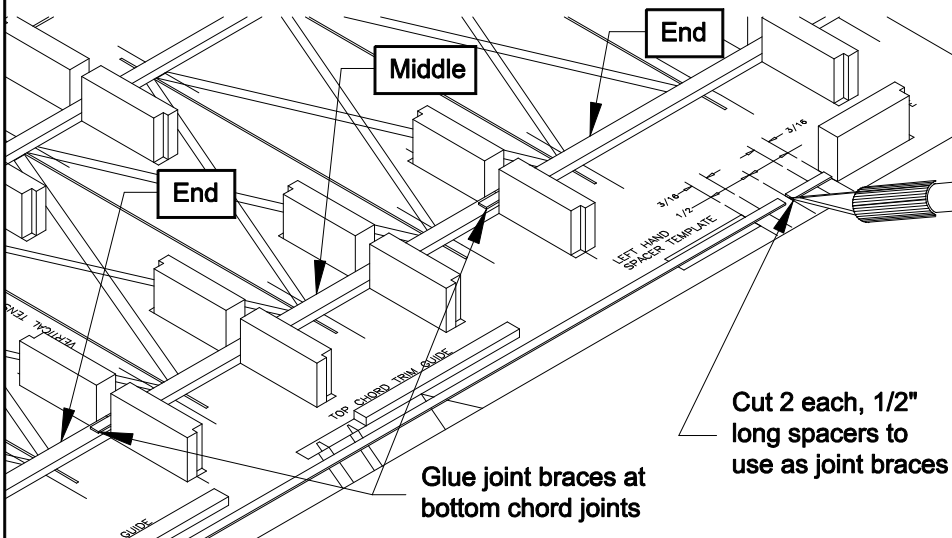
- 17. Glue one (1) of the chord guide blocks at each end of the top chords. Place them snugly against the ends of the top chords.

Press blocks against top chords while gluing them down



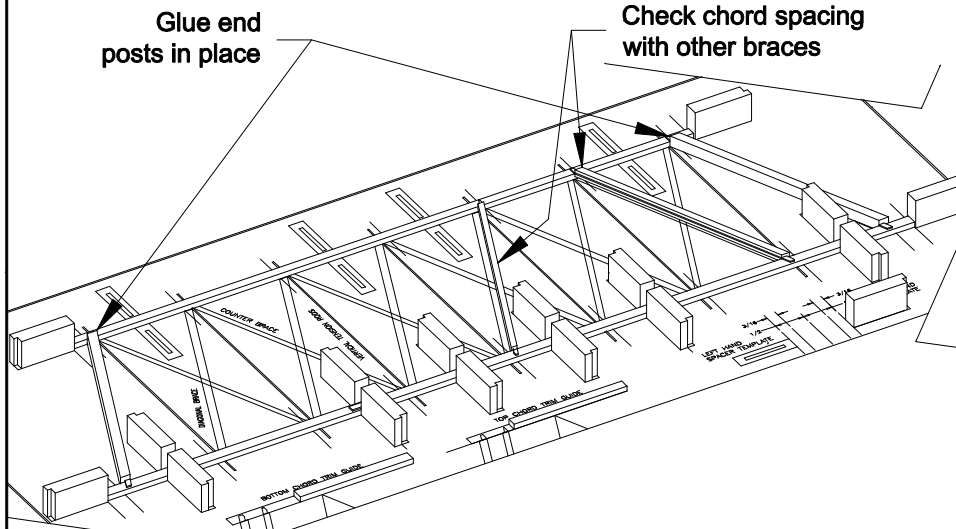
- 18. Perform original Steps 20 and 21. Glue a guide block at the spacer template. Glue a top chord sample at the top chord trimming guide. Glue a bottom chord sample at the bottom chord trimming guide.

- 19. Remove the top three (3) top chords from the assembly jig, leaving one (1) top chord in place. Leave the three (3) bottom pieces (only the first layer) of bottom chord in place in the construction jig. Cut two (2) 1/2" (12.7mm) long pieces from .0208" x .1041 (.5mm x 2.6mm) chord spacer stock to use as joint braces. Glue them across the joints in the bottom chord.

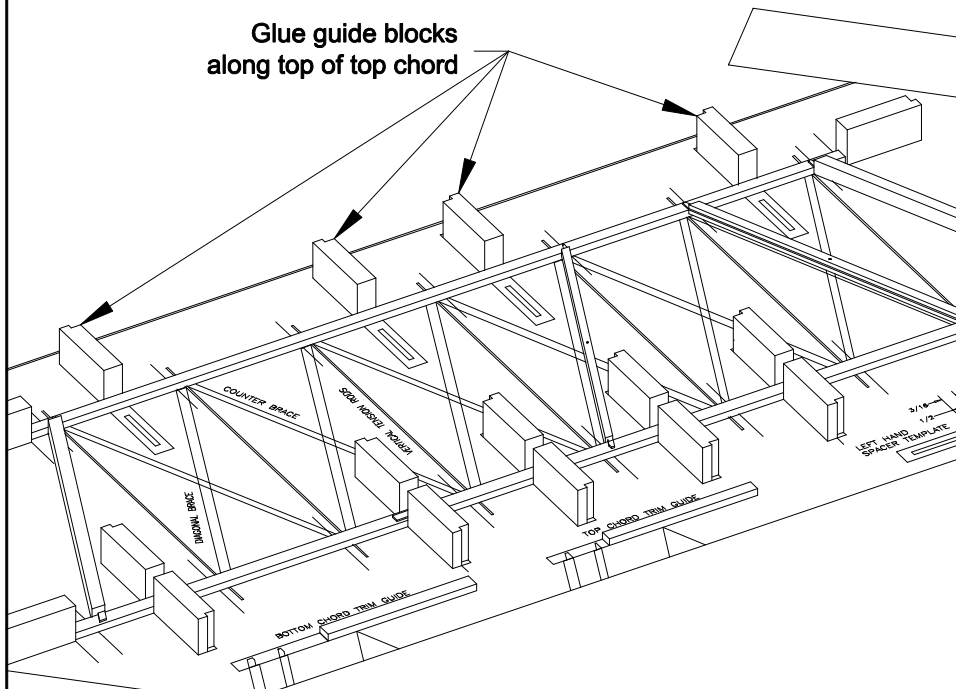


20. Trim the end post core pieces as described in the original instruction Steps 27 and 28.

21. Check the spacing between the chords with the end posts, diagonal braces, and counter braces. Glue the end posts to the top and bottom chords. Be careful and do not glue the chords to the drawing.

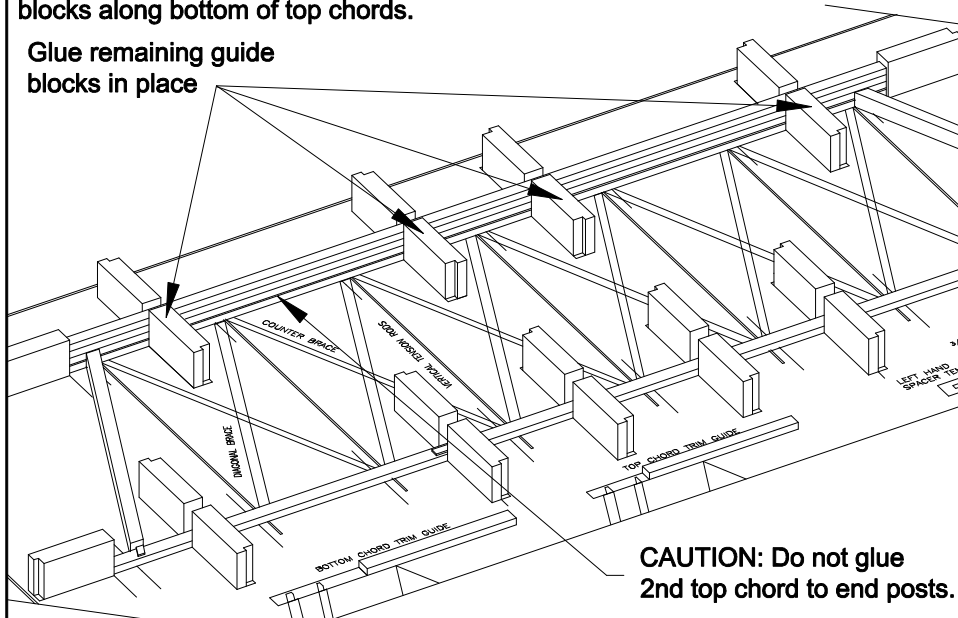


22. Glue chord guide blocks along the top of the top chord. Make sure they are in a straight line.



23. Make sure glue on end posts is dry. Remove extra braces from the jig. Stack three (3) more top chords in the assembly jig. Glue remaining guide blocks along bottom of top chords.

Glue remaining guide blocks in place



24. Perform original Step 24. Cut 42, 3-7/8" (98.4mm) pieces of music wire.

25. Perform original Step 25. Cut 7, 2-3/8" (60.3mm) pieces of music wire.

26. Remove three (3) extra top chords and glue vertical tension rods to top and bottom chords as in original Step 26.

27. Original Steps 27-30 have already been performed. Resume original instructions with original Step 31.

Regarding the construction of the prototype floor. Additional channel stock and NBW's are needed for the bottom side of the bridge. A new Prototype Bridge Drawing with a new Bill of Materials is on the next page.

