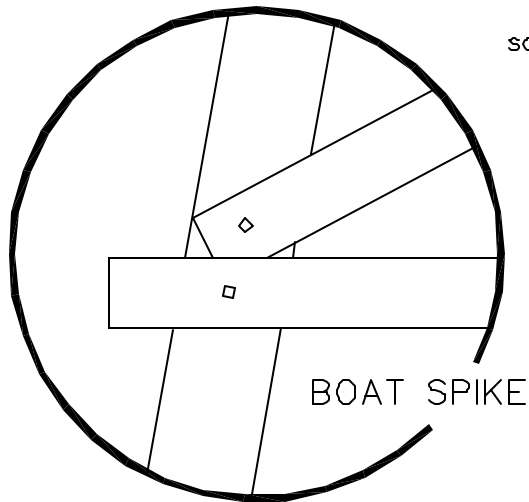


ABOUT NBW'S

Each railroad line has its own set of specifications for attaching the elements of the trestle. The two basic techniques are bolts and "boat spikes".

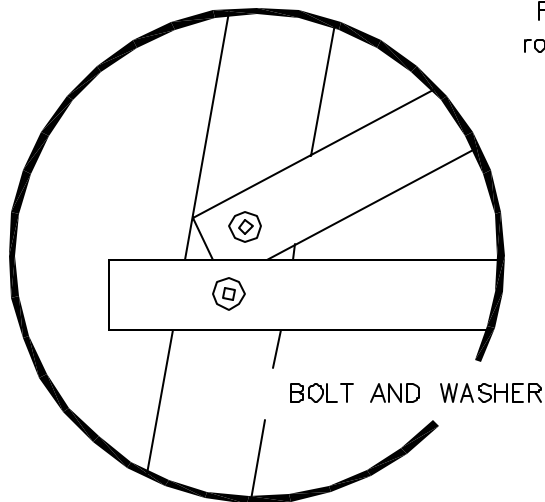
The bolts are typically 1/2" to 3/4" diameter with a 3" to 4" diameter cast iron washer under the head and nut.

The boat spikes are from 5/16" to 1/2" (3/8" is most typical) diameter.



Full size 1-1/8"
square spike head:

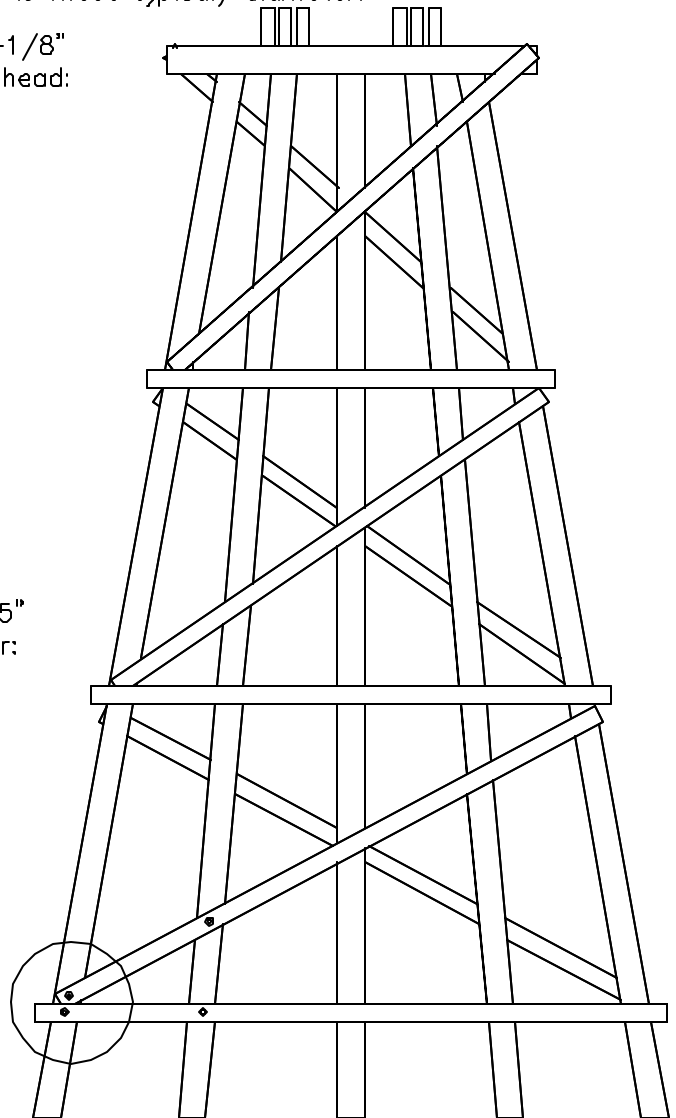
N .
HO .
S .
O .



Full size 3.5"
round washer:

N •
HO •
S •
O •

4X DETAILS



FULL SIZE HO TRESTLE BENT

A cost effective way to show the spike or bolt heads is to use a small spot of black, or dark red (rust colored) acrylic paint. Use high viscosity tube paints that are pasty in texture. Use the flattened end of a toothpick to imprint the "NBW's" shown above.

The Grandt Line NBW's shown in this catalog are intended to represent the nuts and washers used with 2" threaded rods.

Some modelers may wish to install NBW's on the trestles. We recommend the following sizes:

- In N Scale, use P/N GL-5066 (2" threaded rod in N) to create a 6" diameter washer.
 - In HO Scale, use P/N GL-5066 (2" threaded rod in N) to create a 3-1/4" diameter washer.
 - In S Scale, use P/N GL-5093 (2" threaded rod in HO) to create a 4" diameter washer.
 - In O Scale, use P/N GL-5093 (2" threaded rod in HO) to create a 3" diameter washer.
- See page 29 for more dimensional information about NBW's.



(512) 467-8400
FAX (512) 458-8765

© Black Bear Construction Co. 1993-95