

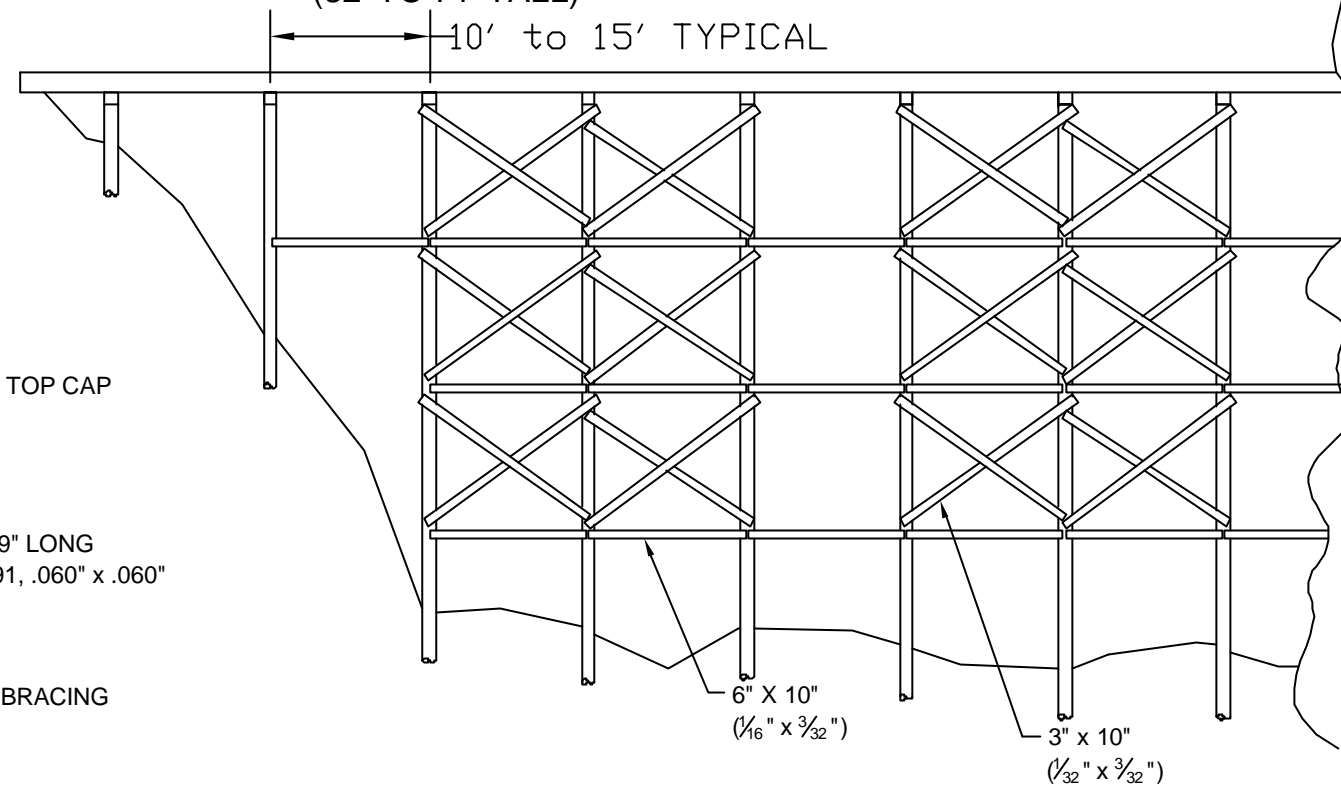
NOTES:
 1 THIS BENT DESIGN IS TYPICAL FOR THE ATCHISON, TOPEKA & SANTA FE RAILWAY. IT IS PRIMARILY BASED ON DATA CONTAINED IN THE **CHIEF WAY REFERENCE SERIES, SYSTEMS STANDARDS, VOLUME 1**, KACHINA PRESS, DALLAS, TX, 1978.

2 3-PLY AND 5-PLY STRINGERS WERE ALSO COMMON ON THE SANTA FE RAILROAD.

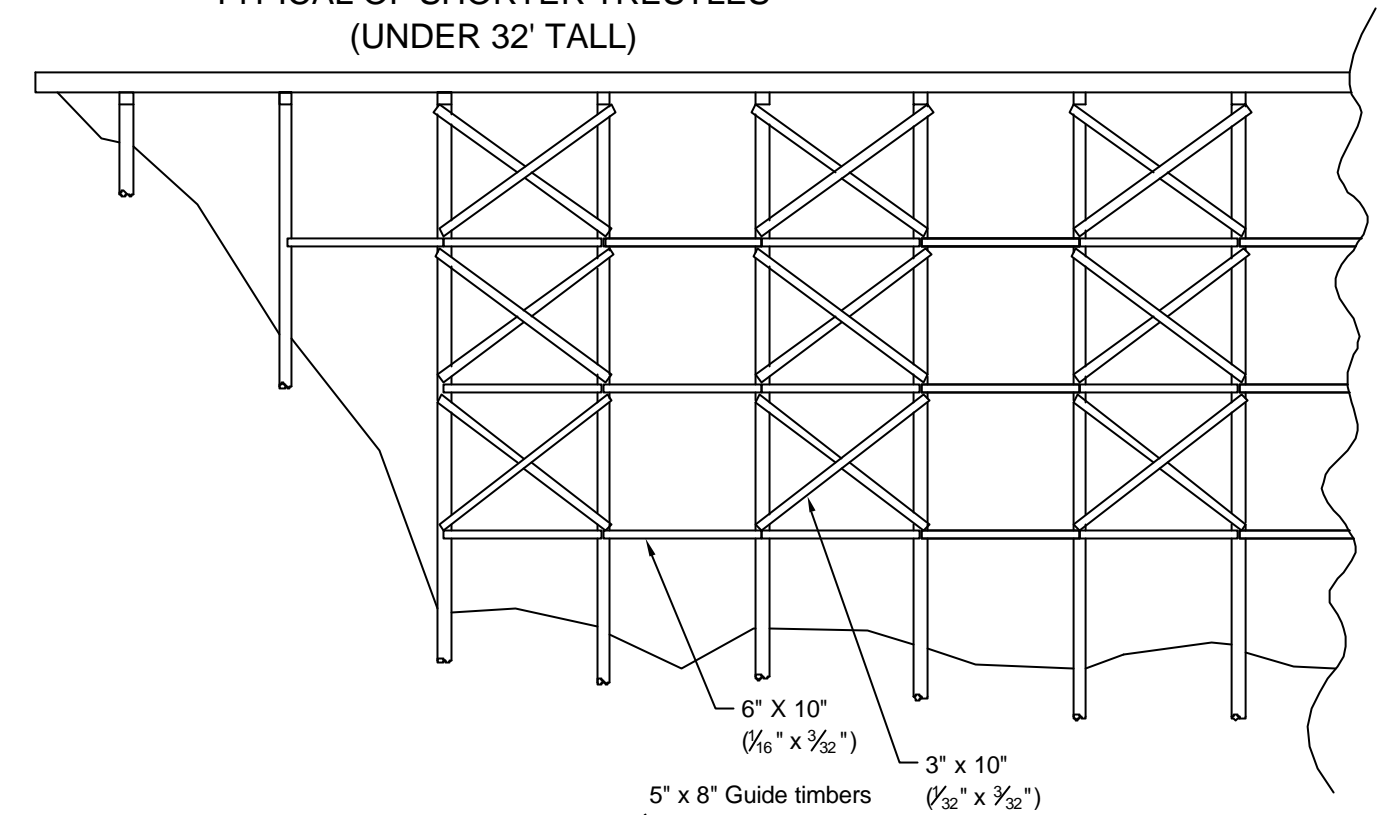
3 PENNSY STRINGERS: 3 PCS, 10" X 16" FOR 10' TO 12' SPANS; 3 PCS, 10" X 20" FOR 14' TO 15' SPANS.

TYPICAL PENNSYLVANIA RR SIDE BRACING

TYPICAL OF TALLER TRESTLES
(32' TO 71' TALL)

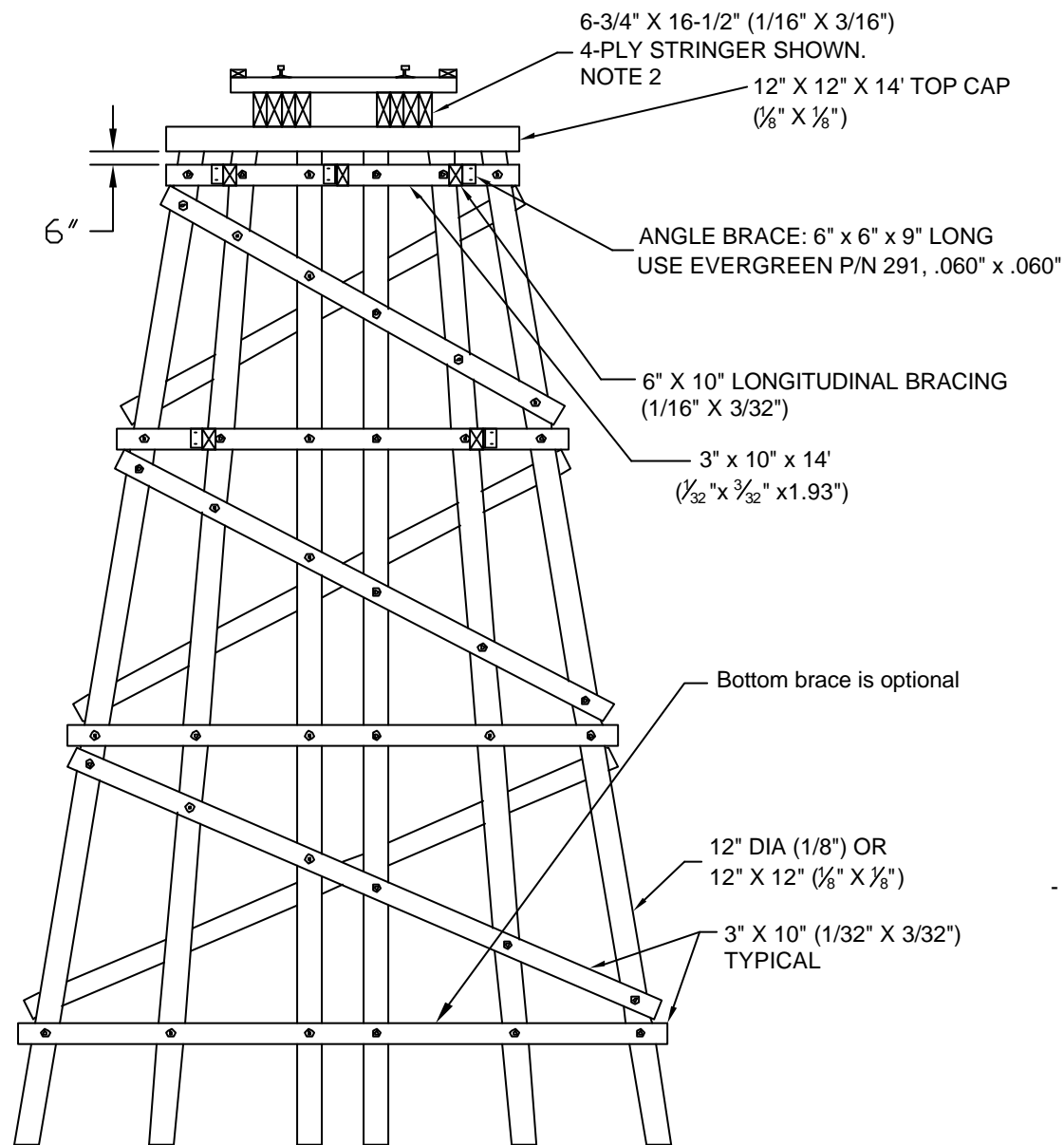
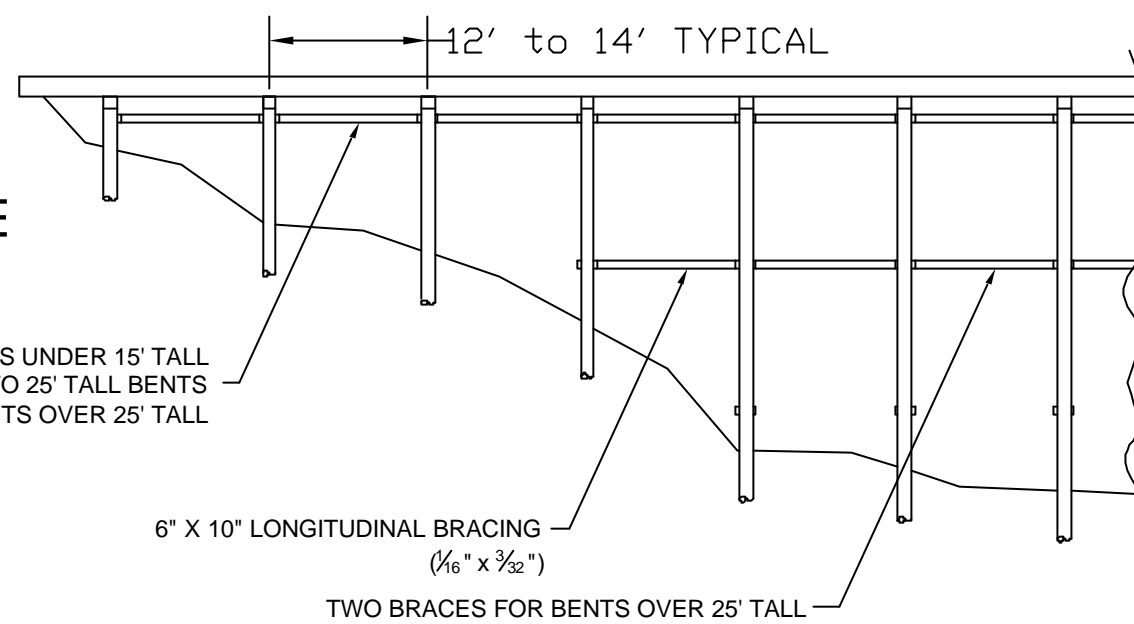


TYPICAL OF SHORTER TRESTLES
(UNDER 32' TALL)

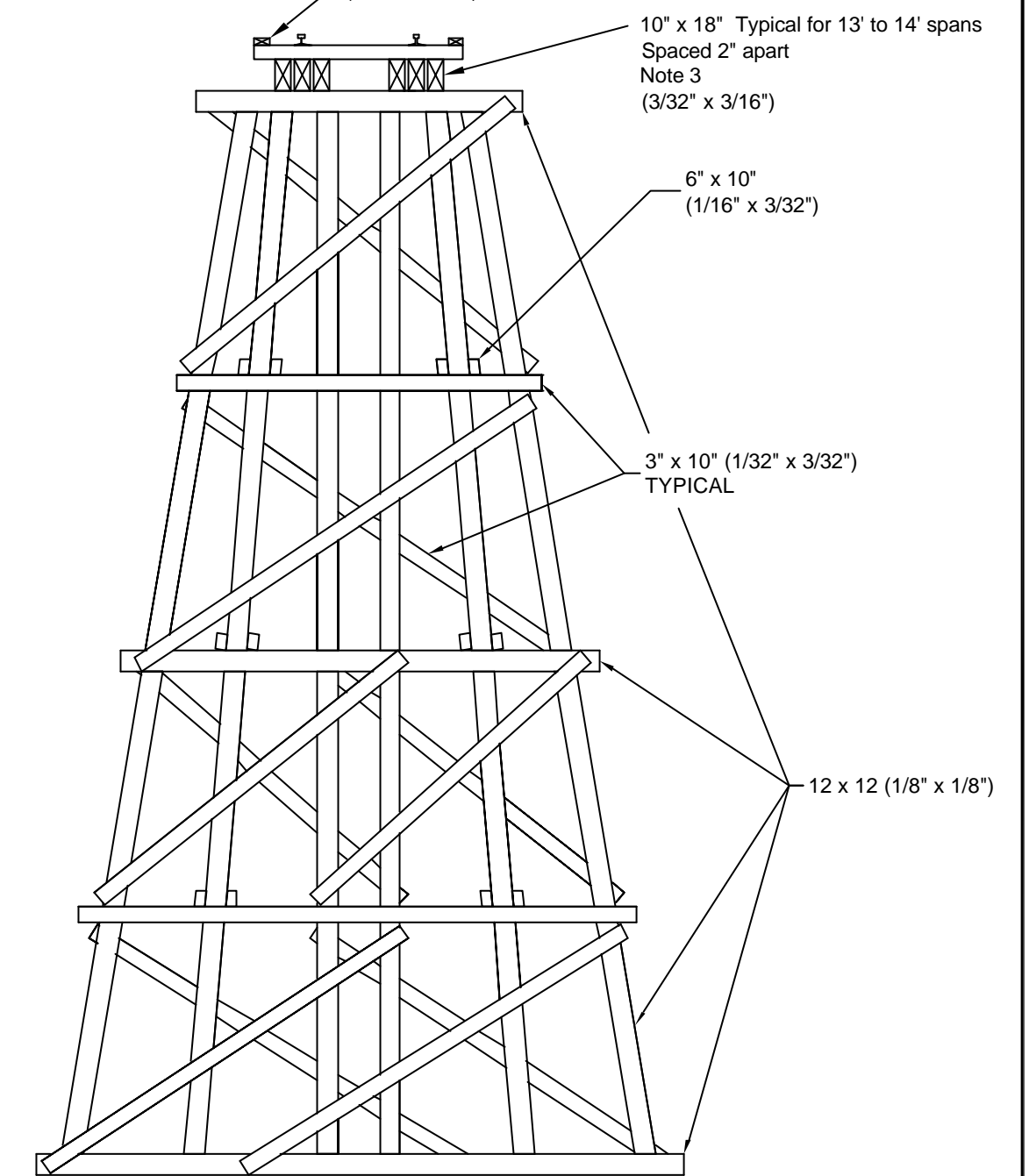


TYPICAL SANTA FE BRACING

- NO BRACES FOR BENTS UNDER 15' TALL
- TWO BRACES FOR 15' TO 25' TALL BENTS
- THREE BRACES FOR BENTS OVER 25' TALL

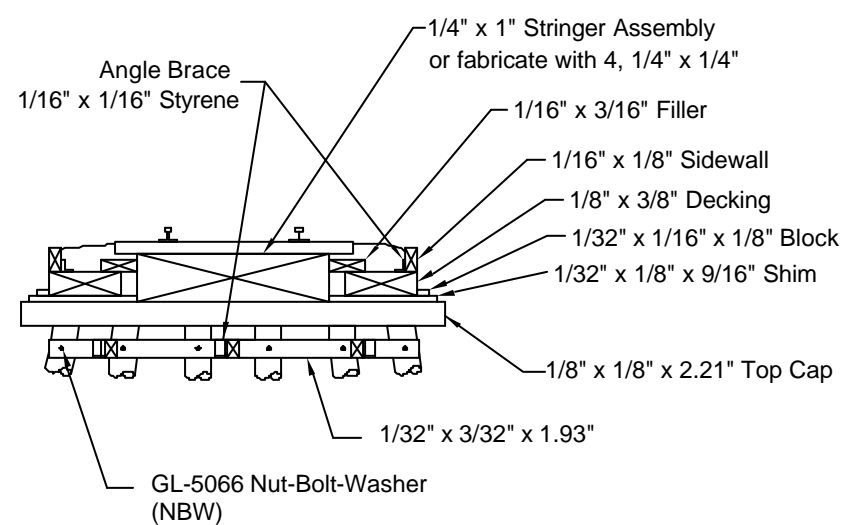


AT&SF OPEN DECK TRESTLE BENT



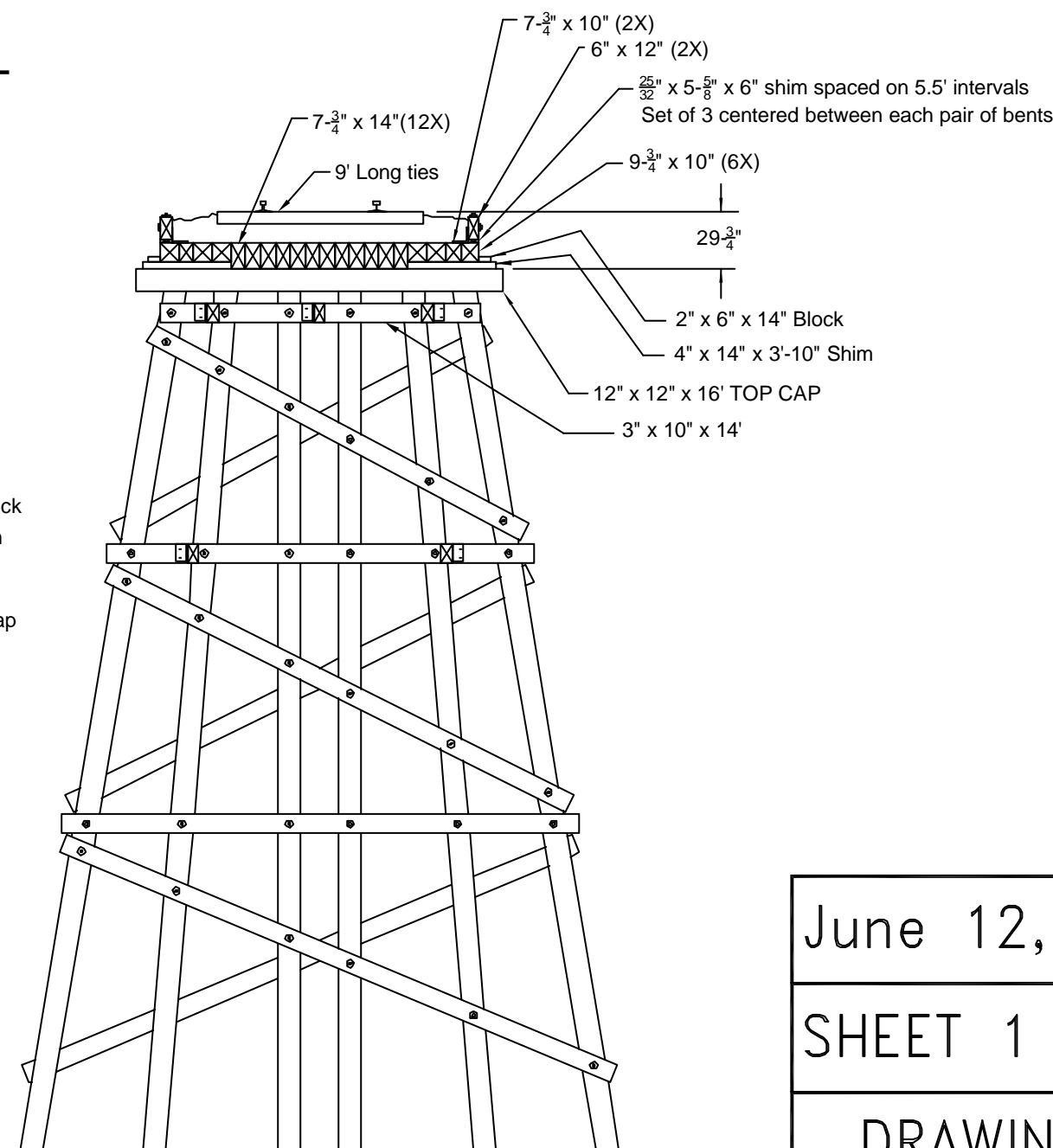
FRAME TRESTLE BENT

BASED ON PENNSYLVANIA RAILROAD PROTOTYPE DRAWINGS



THE MODEL
1:1 for HO scale

AT&SF BALLASTED DECK TRESTLE BENT



THE PROTOTYPE

DRAWING SIZE

June 12, 2008

SHEET 1 OF 2



DRAWING SCALE 1:1

“HO” SCALE 6 LEG TRESTLE



Black Bear Construction Co., Inc.
 PO Box 26911
 (512) 467-8400
 Austin, Texas 78755-0911
 FAX: (512) 985-5110

© 2008 Black Bear Construction Co.