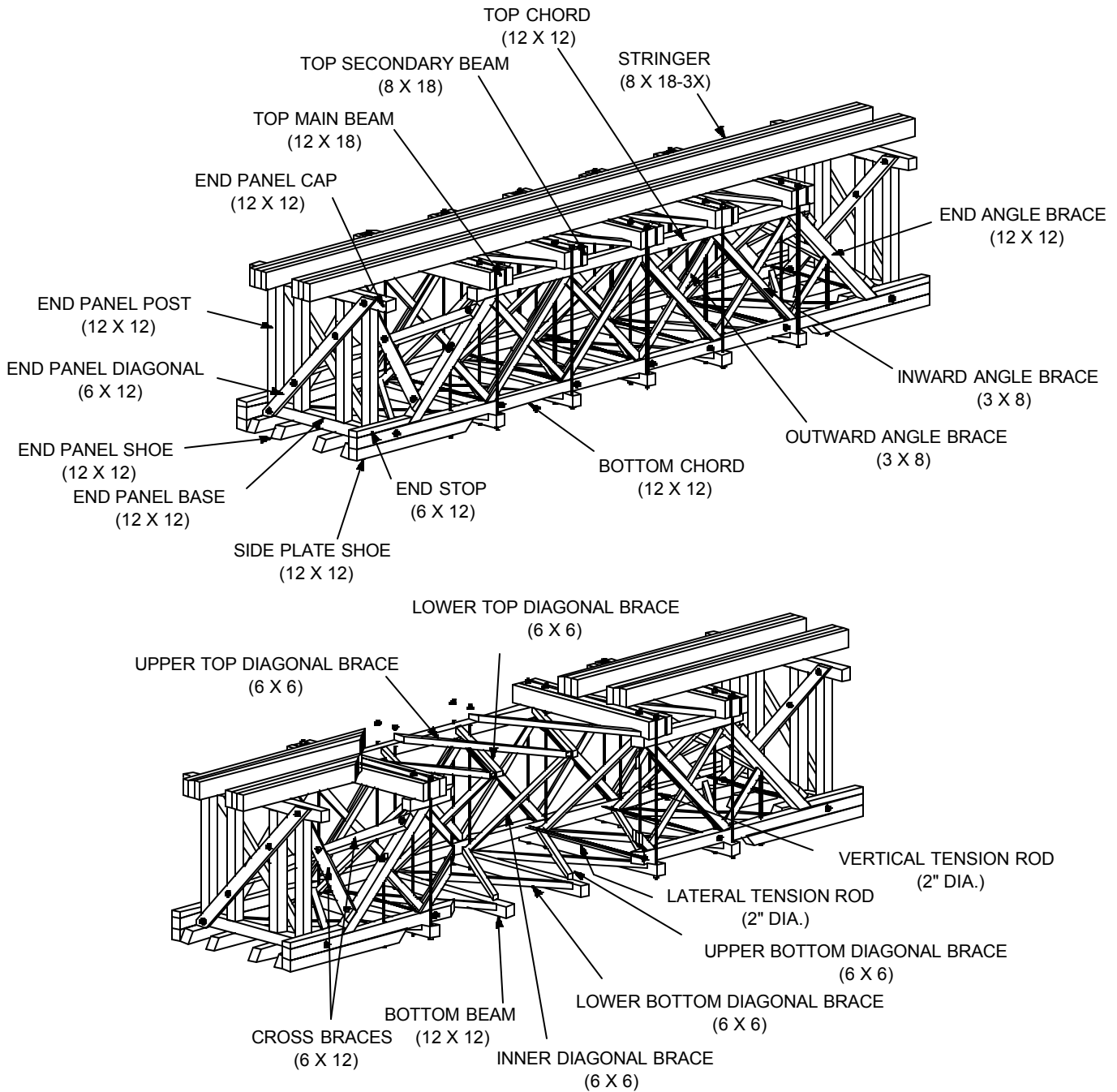


DBK-HO Wood Sizes



© Black Bear Construction Co. 1993-95, 2003

Black Bear Construction Co. Deck Bridge

Prototype Size

For HO Scale, Use:

6" x 12"

1/16" x 1/8"

8" x 18"

3/32" x 3/16"

6" x 6"

1/16" x 1/16"

3" x 8"

1/32" x 3/32"

12" x 12"

1/8" x 1/8"

12" x 18"

1/8" x 3/16"

2" Dia. Rod

.025" Wire

NBW

GL-5093